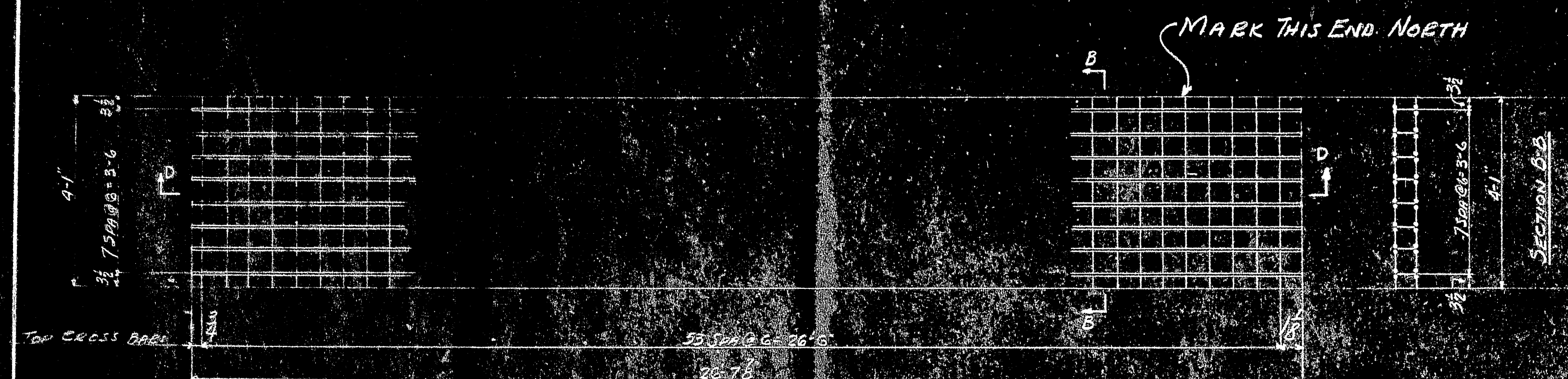


1 PANEL MK A1<sup>R</sup> AS SHOWN  
1 DO MK A1<sup>L</sup> OPP HAND



2 PANELS MK A2<sup>R</sup> AS SHOWN  
2 DO MK A2<sup>L</sup> OPP HAND



1 PANEL MK A3<sup>R</sup> AS SHOWN  
1 DO MK A3<sup>L</sup> OPP HAND



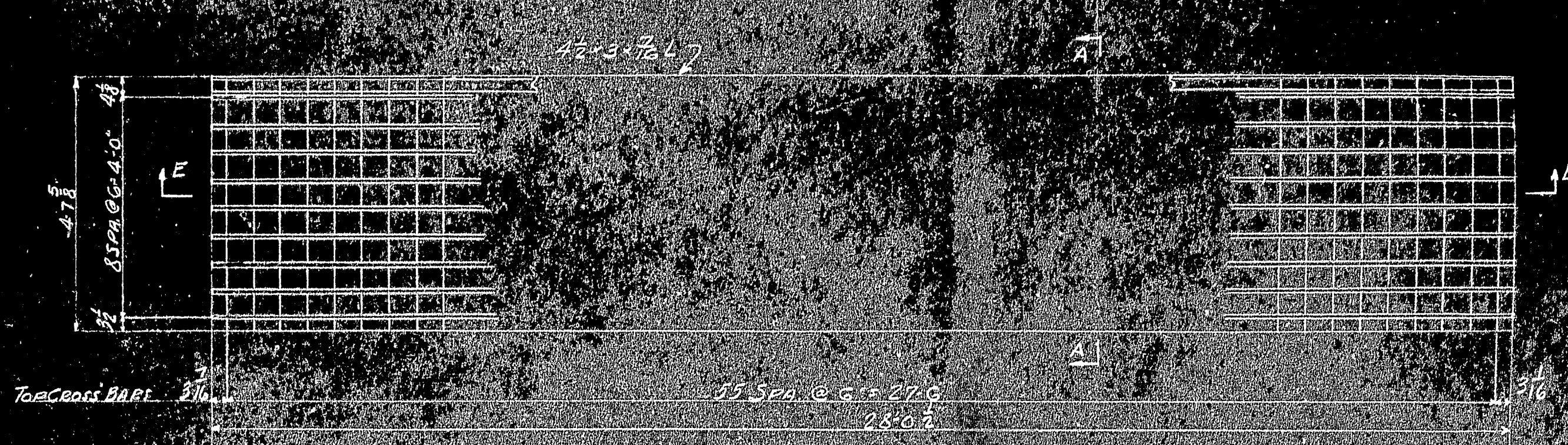
**BILL OF MATERIAL**

PANEL MARKS	NO TOP BEARING BARS	LENGTH	NO BOTTOM BEARING BARS	LENGTH	NO TOP CROSS BARS	LENGTH	NO BOTTOM CROSS BARS	LENGTH	NO REINFORCED BARS	LENGTH	NO ANGLE PLATES	LENGTH
A1 <sup>R</sup>	36	26'-7 1/2"	36	26'-7 1/2"	108	4'-7 1/8"	32	4'-6 3/4"	18	30'-8 1/2"	2	26'-7 1/2"
A1 <sup>L</sup>	36	26'-7 1/2"	36	26'-7 1/2"	324	4'-1"	96	4'-1"	48	30'-8 1/2"	-	-
A2 <sup>R</sup>	36	26'-7 1/2"	32	26'-7 1/2"	108	4'-1 1/8"	32	4'-0 3/4"	16	30'-8 1/2"	2	26'-7 1/2"
A2 <sup>L</sup>	900	28'-0 1/2"	900	28'-0 1/2"	2800	4'-7 1/8"	800	4'-6 3/4"	450	31'-10"	50	28'-0 1/2"
A3 <sup>R</sup>	2400	28'-0 1/2"	2400	28'-0 1/2"	1000	4'-1"	2400	4'-1"	1200	31'-10"	-	-
A3 <sup>L</sup>	700	28'-0 1/2"	800	28'-0 1/2"	2800	4'-1 1/8"	800	4'-0 3/4"	400	31'-10"	50	28'-0 1/2"

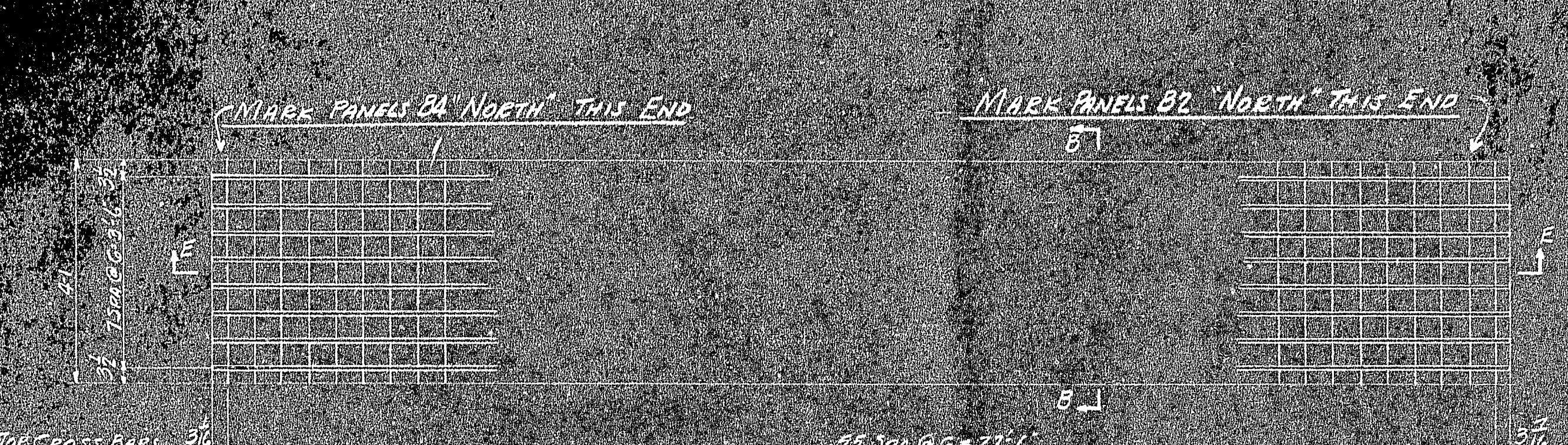
END ANGLE SPLICES

**BILL OF MATERIAL FOR SPLICE BARS**

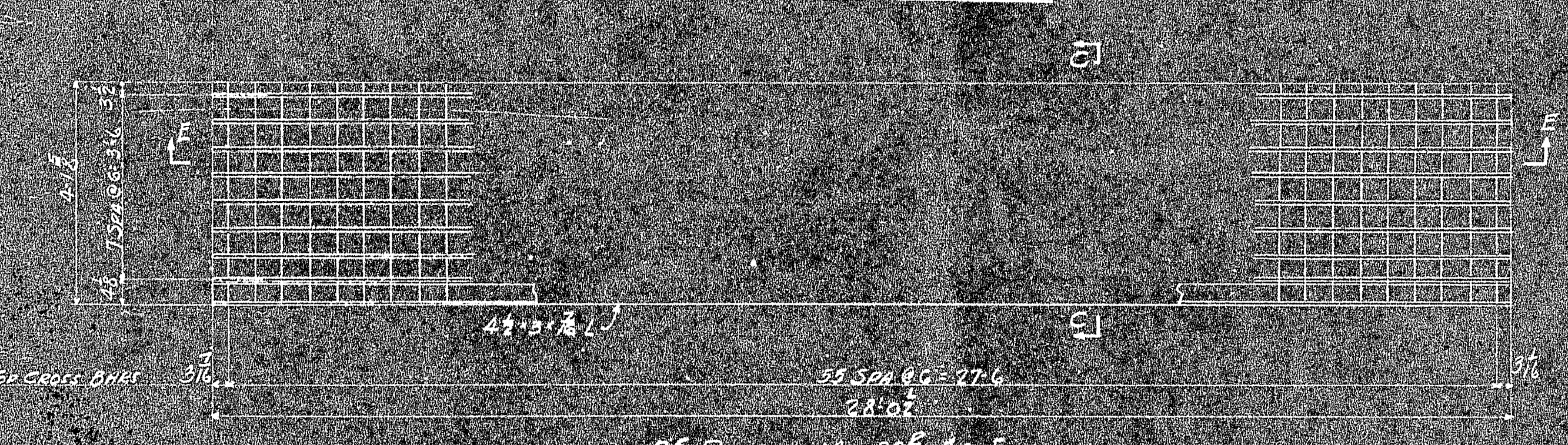
TYPE	NO SPLICE BARS PER JOINT	NUMBER OF JOINTS	TOTAL NUMBER OF SPLICE BARS	SIZE OF BARS	TOTAL LENGTH
F	8	20	160	1/2" x 2-0	140'-0"
G	8	34	272	3/4" x 2-0	1632'-0"
J	1	24	24	1/2" x 1-0	24'-0"
K	1	42	42	1/2" x 1-6	63'-0"



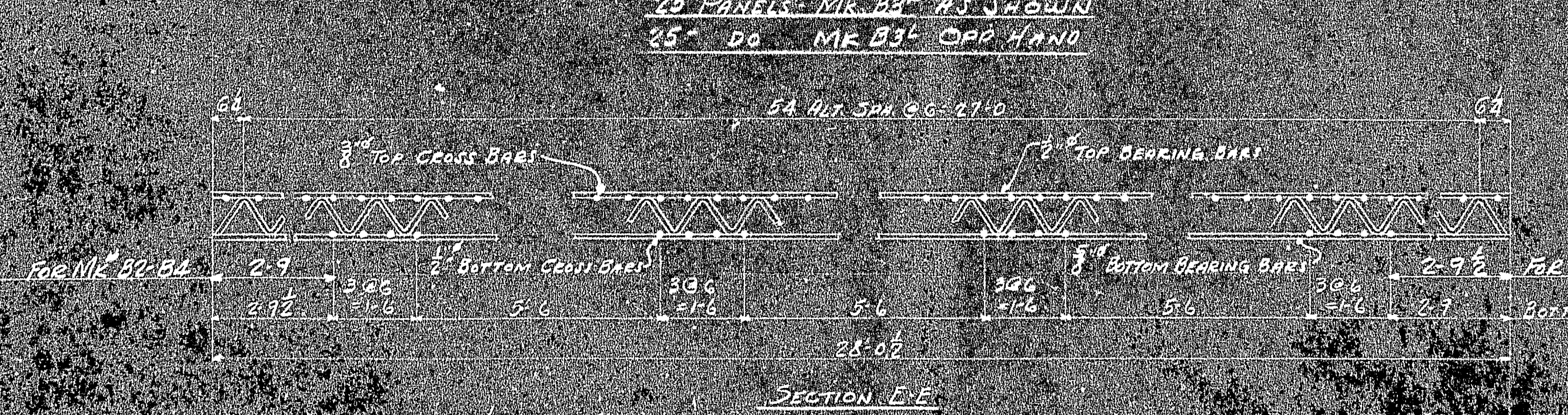
25 PANELS MK B1<sup>R</sup> AS SHOWN  
25 DO MK B1<sup>L</sup> OPP HAND



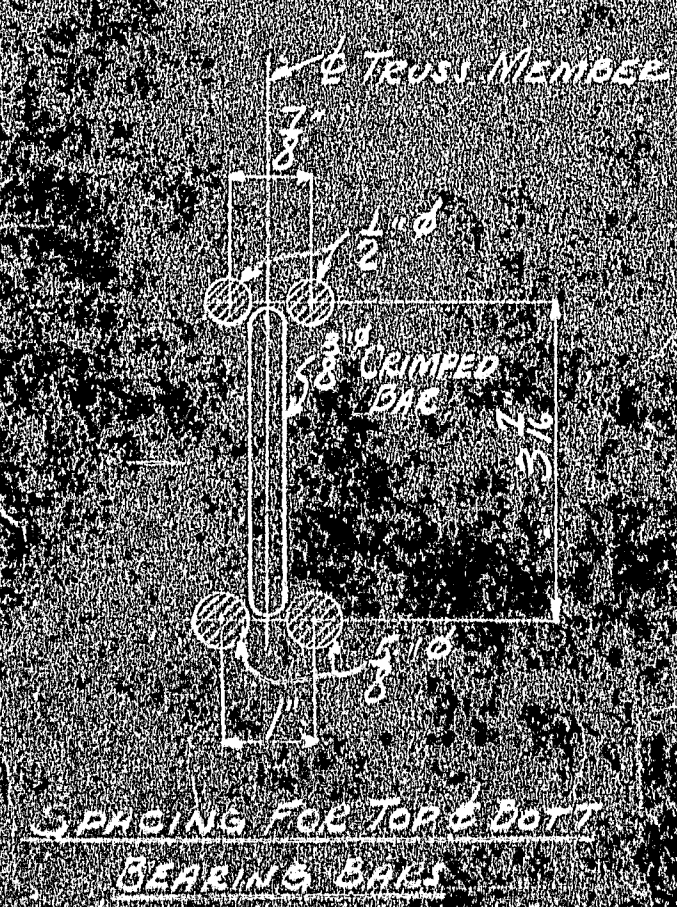
15 PANELS MK B2  
15 DO MK B4



25 PANELS MK B3<sup>R</sup> AS SHOWN  
25 DO MK B3<sup>L</sup> OPP HAND



SECTION E-E



APPROVED

NOTE: FOR FORM & SPACING SEE DWG 3031-8  
FOR ALL OTHER NOTES, SEE DWG 3031-1

CUSTOMER THE PHOENIX BRIDGE CO. PHOENIXVILLE, PA.		RELiance STEEL PRODUCTS COMPANY RANKIN, (PITTSBURGH DISTRICT) PA. BRIDGE DEPARTMENT	
PROJECT RANKIN BRIDGE ME 1010 D		LOCATION DEPT. OF TRANSPORTATION BRIDGE - HANCOCK COUNTY, MD.	
CUSTOMER ORDER NO. REFERENCE	DRAWN G.M.H. 5/18/38	APPROVED BY G.M.H. 5/18/38	DWG. NO. 3031-2
CHECKED G.M.H. 5/18/38	TRACED	CONTRACT NO. 73325	

